

Digitized Automation for a Changing World

Delta Vision Software **(for Character Recognition / Barcode Reading)** **DIAVision IDM**



**Outstanding Inspection Solution for
Character Recognition / Barcode Reading**

Features



High-speed Inspection

Matches with industrial PCs and GigE cameras for high-speed inspection



High Stability

Advanced algorithm for accurate character recognition / barcode reading despite stains or damage



High Recognition Accuracy

- Accurately recognizes deformed fonts and characters in changed dimensions
- Supports Chinese character recognition



Low Judgement Errors

High recognition capability to reduce judgement errors for similar characters (e.g. 6 and 8)



User-friendly Operation

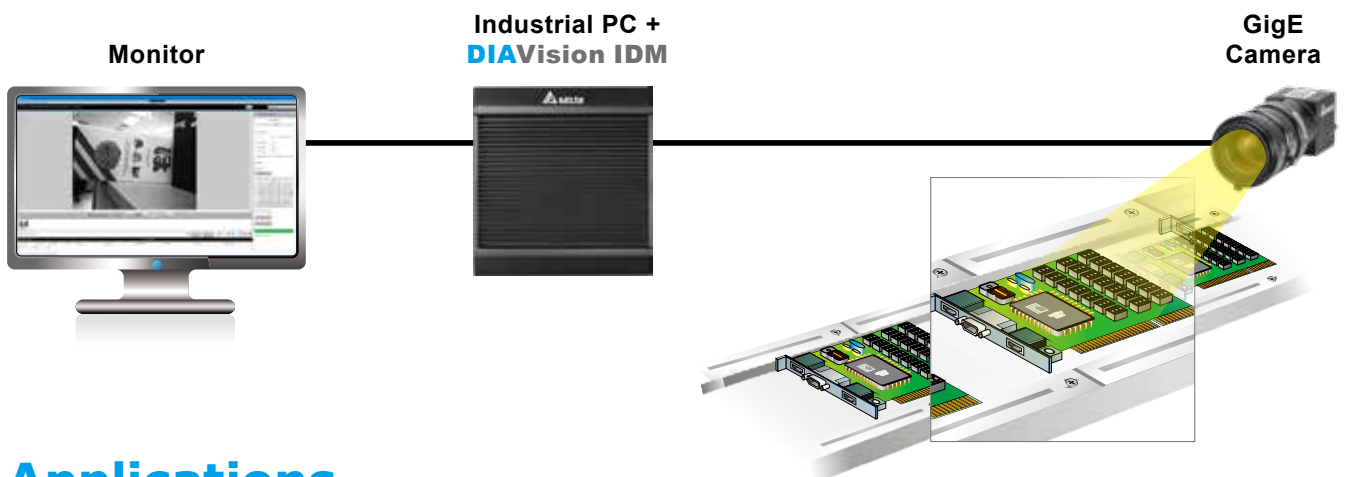
Intuitive windows interface for settings and operation, easy to learn



High Compatibility

Compatible with industrial cameras of different resolution to perform precise inspection

System Configurations



Applications

Packaging



Electronic Components



Logistics



Warehousing



Food & Beverage

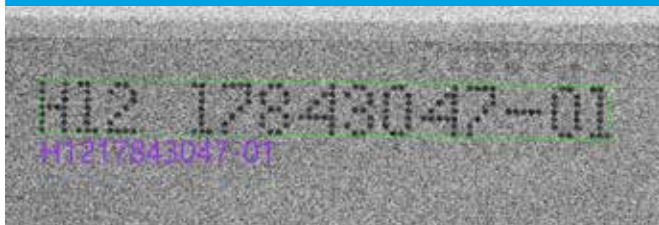


Inspection Formats

Character Recognition	Flexible Character Modeling/ 1D Barcode	2D Barcode
Various characters	Code 128 Code 39 Code 93 Interleaved 2 of 5 Codabar UPC/EAN/JAN UPC-A UPC-E EAN-8 EAN-13 2-digit supplemental 5-digit supplemental GS1 DataBar GS1 DataBar Omnidirectional (RSS-14) GS1 DataBar Stacked (RSS-14 Stacked) GS1 DataBar Limited GS1 DataBar Expanded GS1 DataBar Expanded Stacked Code 11 Code 32 Plessey MSI Plessey Telepen Trioptic BC412 Matrix 2 of 5 Straight 2 of 5 (3-bar Start/Stop) IATA 2 of 5 NEC 2 of 5 Hong Kong 2 of 5 Pharmacode USPS Postnet USPS Planet USPS Intelligent Mail Australia Post Dutch Post (KIX) Japan Post Royal Mail Korea Post UPU ID-tags Canada Post	PDF417 MicroPDF417 Composite Codes (CC-A/CC-B/CC-C) Codablock F Code 49 Data Matrix QR Code Micro QR Code Aztec Code Han Xin Code MaxiCode GoCode (Version I and II) Grid Matrix

Character Recognition Examples

Characters of poor quality or with interference

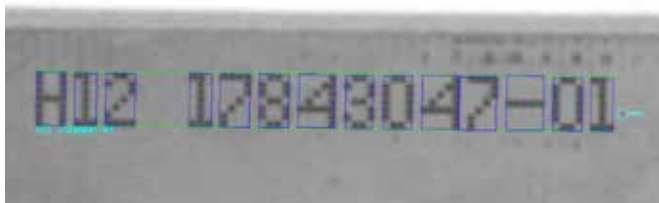


Characters printed on curved surfaces of different materials

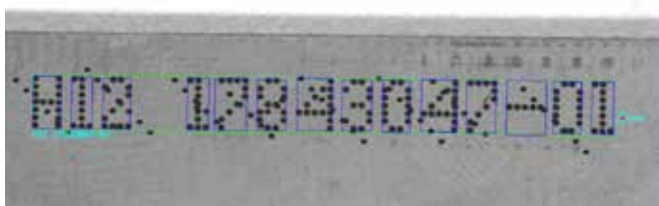
(e.g. Expiration dates printed on the the bottom of aluminum cans, bottles, and others)



Blurry images and characters



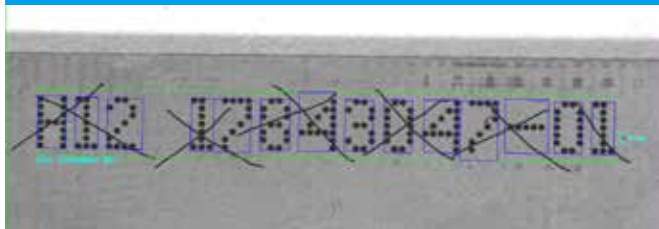
Characters with stains



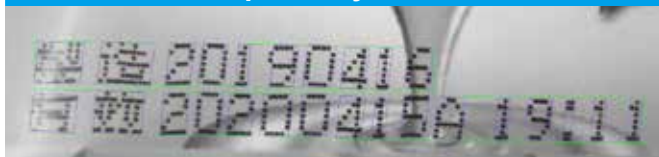
Characters at different angles
(0 ~ 360 degrees)



Characters with lines



Dot matrix characters of Chinese/
special symbols



Industrial Automation Headquarters

Delta Electronics, Inc.

Taoyuan Technology Center

No.18, Xinglong Rd., Taoyuan District,

Taoyuan City 33068, Taiwan

TEL: 886-3-362-6301 / FAX: 886-3-371-6301

DELTA_IA-DMV_DIAVision IDM_B_EN_20201012



Smarter. Greener. Together.